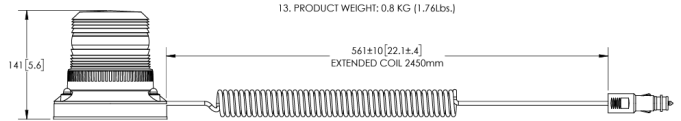
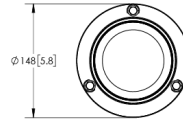


ROTATING BEACONS

622LED-M-GR

Beacon | LED | magnetic | 12-24V | green

EAN: 5414184441484



SPECIFICATIONS

1. CERTIFICATIONS: ECE R10
Note: Unique components, accessories and hardware kits are not typically included in the product certification test protocols. Unless otherwise Specified, the product certification referred to herein are predicated Upon the base product model configuration.
2. FLASH MODE: 135 ± 15 FPM, DOUBLE FLASH
3. VOLTAGE (NOMINAL): 12/24 VDC
4. VOLTAGE (EXTREME): 10 to 36VDC
5. CURRENT (RMS): 1.06A (@ 10 VDC NOMINAL)
6. CURRENT (PEAK): 1.85A (@ 10 VDC NOMINAL)
7. POWER (RMS MAXIMUM): 23W (@ 24 VDC NOMINAL)
8. TEMPERATURE RANGE: -20°C (-4°F) TO 50°C (122°F)
9. CONNECTION: CIGARETTE PLUG
10. MOUNTING: MAGNETIC
11. BASE MATERIAL: ASA
12. LENS MATERIAL: POLYCARBONATE
13. PRODUCT WEIGHT: 0.8 KG (1.76lbs.)

Specifications

Color	Green	Light source	LED
Colour of lens	Green	Mounting	Magnetic
Connection	Cigar-lighter plug	Number of LEDs	9
Diameter mm	148 mm	Number of flash patterns	1
ECE R65 Class 1	No	Operating voltage	12V - 24V
EMC	EMC R10	Operation temperature	-20°C / +50°C
EMC R10	Yes	Packing	White box with label
Height mm	142 mm	To be ordered by	1
Height range	131 - 170 mm	Weight (kg)	0,800 Kg
IP-degree	IP65		



AEB