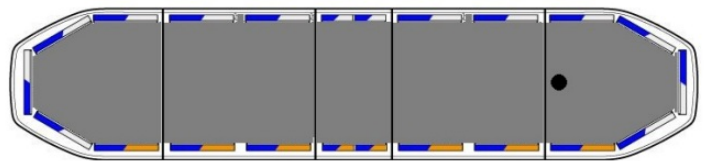
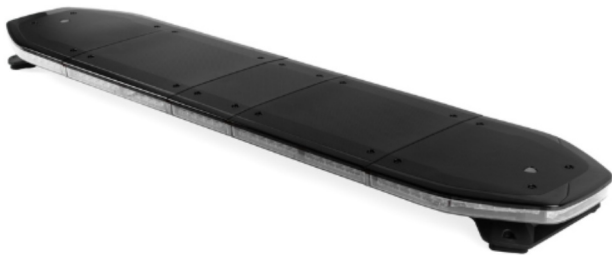


LED LIGHTBARS

**RDN137-BL-
FULL-DAKCON**

Raiden LED lightbar | 137 cm | full option | roof connector | blue

EAN: 5414184528901



Specifications

Alley lights	Yes
Automatic day/night sensor	Yes, integrated
Break lights integrated	No
Characteristics	Equipped with a 9-pin roof connector
Color	Blue/white
Colour of lens	Clear
Connection	Open cable ends
Current draw 12V Amp	Average 12 amp , max 24 amp
Dimensions	1371 mm x 308 mm x 40 mm (without mounting brackets)
Directional arrow	Yes, at the back side
ECE R65 Class 1	Yes
ECE R65 Class 2	Yes
EMC R10	Yes
Good to know	Low profile mounting brackets are included

Length range	LARGE (131 - 150 cm)
Light source	LED
Mounting	Fixed
Number of LEDs	324
Operating voltage	12V - 24V
Packing	Brown box with label
Protocol	CANBUS, pre-programmed
Roof connector	Yes, already installed
Series	Raiden
To be ordered by	1
Top cover	Black
Type of roof connector	9-pin
Waterproof	Yes

ICAO	No
Length of cable (m)	5 m (0,4 m - 4,6 m)