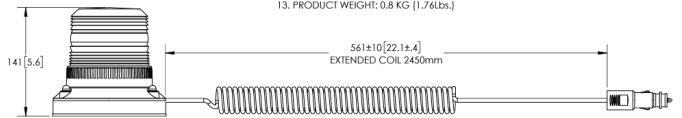
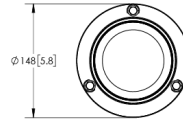


EAN: 5414184441484



SPECIFICATIONS

1. CERTIFICATIONS: ECE R10
Note: Unique components, accessories and hardware kits are not typically included in the product certification test protocols. Unless otherwise Specified, the product certification referred to herein are predicated Upon the base product model configuration.
2. FLASH MODE: 135 ± 15 FPM, DOUBLE FLASH
3. VOLTAGE (NOMINAL): 12/24 VDC
4. VOLTAGE (EXTREME): 10 to 36VDC
5. CURRENT (RMS): 1.06A (@ 10 VDC NOMINAL)
6. CURRENT (PEAK): 1.85A (@ 10 VDC NOMINAL)
7. POWER (RMS MAXIMUM): 23W (@ 24 VDC NOMINAL)
8. TEMPERATURE RANGE: -20°C (-4°F) TO 50°C (122°F)
9. CONNECTION: CIGARETTE PLUG
10. MOUNTING: MAGNETIC
11. BASE MATERIAL: ASA
12. LENS MATERIAL: POLYCARBONATE
13. PRODUCT WEIGHT: 0,8 KG (1.76lbs.)

Caractéristiques

Couleur	Vert	Montage	Magnétique
Couleur lentille	Vert	Nombre de LEDs	9
Degré-IP	IP65	Nombre de fonctions flash	1
Diamètre mm	148 mm	Poids (kg)	0,8 Kg
ECE R65 Classe 1	Non	Raccordement	Fiche allume cigare
EMC	EMC R10	Source lumineuse	LED
EMC R10	Oui	Temperature d'opération	-20°C / +50°C
Emballage	Boite blanche avec étiquette	Tension	12V - 24V
Hauteur	131 - 170 mm	À commander par	1
Hauteur mm	142 mm		