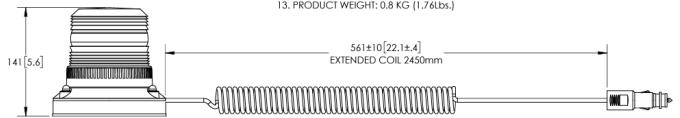
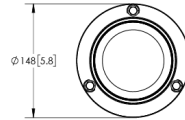


# LAMPEGGIANTI ROTANTI

622LED-M-GR

Lampeggiatore LED | magnetic | 12-24V | verde

EAN: 5414184441484



## SPECIFICATIONS

1. CERTIFICATIONS: ECE R10

Note: Unique components, accessories and hardware kits are not typically included in the product certification test protocols. Unless otherwise Specified, the product certification referred to herein are predicated Upon the base product model configuration.

2. FLASH MODE: 135 ± 15 FPM, DOUBLE FLASH

3. VOLTAGE (NOMINAL): 12/24 VDC

4. VOLTAGE (EXTREME): 10 to 36VDC

5. CURRENT (RMS): 1.06A (@ 10 VDC NOMINAL)

6. CURRENT (PEAK): 1.85A (@ 10 VDC NOMINAL)

7. POWER (RMS MAXIMUM): 23W (@ 24 VDC NOMINAL)

8. TEMPERATURE RANGE: -20°C (-4°F) TO 50°C (122°F)

9. CONNECTION: CIGARETTE PLUG

10. MOUNTING: MAGNETIC

11. BASE MATERIAL: ASA

12. LENS MATERIAL: POLYCARBONATE

13. PRODUCT WEIGHT: 0,8 KG (1.76lbs.)

## Specifiche

Altezza mm	142 mm	Gamma di altezza	131 - 170 mm
Colore	Verde	Grado di protezione IP	IP65
Colore della lente	Verde	Imballaggio	Scatola bianca con etichetta
Connessione	Spina per accendisigari	Montaggio	Magnetico
Da ordinare presso	1	Numero di LED	9
Diametro mm	148 mm	Numero di sequenze di lampeggio	1
ECE R65 Classe 1	No	Peso (kg)	0,800 Kg
EMC	EMC R10	Temperatura di esercizio	-20°C / +50°C
EMC R10	Si	Tensione operativa	12V - 24V
Fonte luminosa	LED		