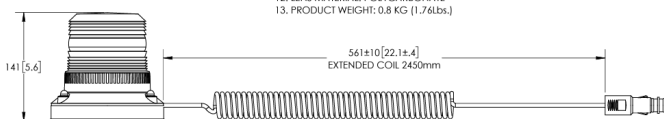
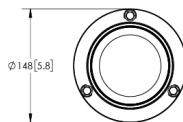


EAN: 5414184441484



SPECIFICATIONS

1. CERTIFICATIONS: ECE R10
Note: Unique components, accessories and hardware kits are not typically included in the product certification test protocols. Unless otherwise Specified, the product certification referred to herein are predicated Upon the base product model configuration.
2. FLASH MODE: 135 ± 15 FPM, DOUBLE FLASH
3. VOLTAGE (NOMINAL): 12/24 VDC
4. VOLTAGE (EXTREME): 10 to 36VDC
5. CURRENT (RMS): 1.06A (@ 10 VDC NOMINAL)
6. CURRENT (PEAK): 1.85A (@ 10 VDC NOMINAL)
7. POWER (RMS MAXIMUM): 23W (@ 24 VDC NOMINAL)
8. TEMPERATURE RANGE: -20°C (-4°F) TO 50°C (122°F)
9. CONNECTION: CIGARETTE PLUG
10. MOUNTING: MAGNETIC
11. BASE MATERIAL: ASA
12. LENS MATERIAL: POLYCARBONATE
13. PRODUCT WEIGHT: 0,8 KG (1.76lbs.)

Specificaties

Aansluiting	Stekker voor sigarettenaansteker
Aantal LEDs	9
Aantal flitspatronen	1
Bedrijfstemperatuur	-20°C / +50°C
Bestelbaar per	1
Bevestiging	Magnetisch
Diameter mm	148 mm
ECE R65 Klasse 1	Nee
EMC	EMC R10
EMC R10	Ja

Gewicht (kg)	0,8 Kg
Hoogte mm	142 mm
Hoogte range	131 - 170 mm
IP-graad	IP65
Kleur	Groen
Kleur lens	Groen
Lichtbron	LED
Verpakking	Witte doos met etiket
Voeding	12V - 24V